



Commercial Capabilities





For over 75 years, Kolbe has been known for innovative products that push the boundaries and defy the limits of function, performance and style. Exceptional design, quality craftsmanship, endless options and custom solutions allow Kolbe to personalize your design experience with distinctive windows and doors. With multiple product lines designed to meet specific architectural and aesthetic goals, each offers distinct advantages, while remaining vastly customizable.

COMMERCIAL CAPABILITIES

Window & door solutions to meet design intent, building codes & performance requirements.

Kolbe's commercial capabilities include:

- A variety of products & options that address style, aesthetic & architectural details
- Assistance with LEED®, green-build, sustainable, & net zero energy project goals
- Forest Stewardship Council® (FSC®) Chain-of-Custody-certified wood species (license code FSC®-C019541)
- Products designed to provide optimal energy efficiency to help manage comfort & costs
- Glass options for enhanced acoustics & noise reduction
- Custom solutions & historical replication
- Indoor-outdoor & pass-through capabilities
- Accessible design & ease-of-operation options
- Automation & impact performance modifications



Energy Efficiency

Kolbe participates in the Window & Door Manufacturers Association (WDMA) Hallmark Certification and ENERGY STAR® programs to ensure that our products are tested to industry standards created to meet today's strict building codes.

Many of Kolbe's products can also meet California's Title 24 Building Energy Efficiency Standards, as well as Passive House Institute US (PHIUS) verification. Kolbe also can assist with LEED®, green build, and sustainable project goals.



© Daniel Showalter Photography

Acoustics

Kolbe offers windows and doors with laminated dual and triple pane insulated glass that helps reduce outside noise to create quiet, comfortable spaces. Select sizes are tested to meet Sound Transmission Class (STC) and Outdoor-Indoor Transmission Class (OITC) values, with use of dissimilar glass thicknesses (including laminated glass) to further increase the acoustic performance for a more relaxing interior environment.



Style & Design

Whether new construction, historical replication or restoration, Kolbe offers distinctive style and design options to make every commercial project unique. A choice of wood species, sizes, shapes, exterior trim, glass, divided lite profiles, hardware, color, finishes and more – can transform a building with intricate details and architectural authenticity. Or work with us to create a custom solution with carefully chosen windows and doors that best suit your project.



Segment Overview

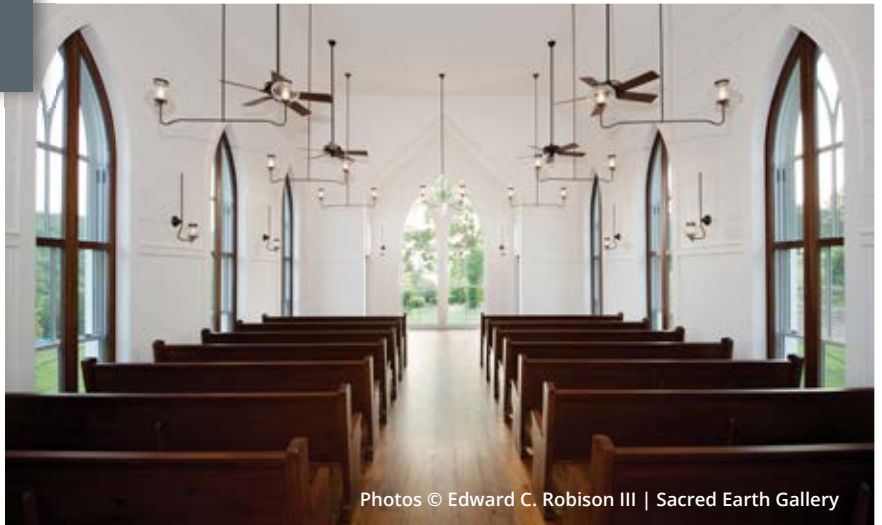
Education

Kolbe® windows and doors are ideally suited to educational facilities, offering enhanced daylight, energy efficiency, accessible design and ease of operation. Carefully chosen products can update a building with modern performance and functionality, while meeting the building code requirements and design intent. Kolbe's LEED®-certified professionals can offer assistance with LEED, green build, and sustainable project goals.



Worship

Kolbe's windows and doors offer a vast range of styles, sizes and configurations, with custom capabilities to achieve architectural details and specialty shapes. Multiple product lines and nearly endless options are ideal for renovation, restoration and new construction of public gathering spaces. And with performance upgrades to enhance energy efficiency and acoustics, comfortable spaces can be created wherever people congregate.



Historical

Kolbe windows and doors are crafted with precision to replicate the most intricate details required for architectural authenticity and aesthetic, while meeting strict building codes and historical district requirements. Designed to marry traditional design aesthetics with modern technology, our handcrafted products enhance both style and performance.

Kolbe's versatile products were the perfect solution for many National Historic Landmarks and National Trust for Historic Preservation projects across the US.



Find Kolbe® in these – plus many more – commercial markets.

(see Commercial Project List, pgs. 32-36)



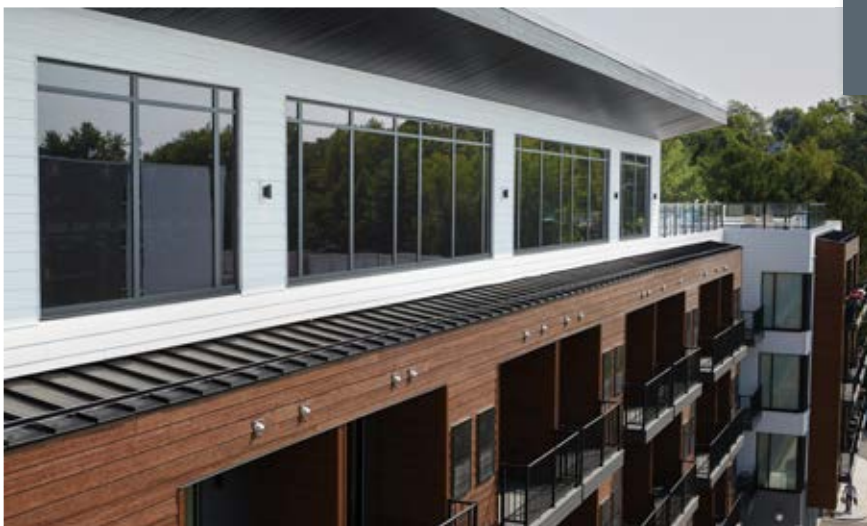
Recreation

Many of Kolbe's products can be seen throughout America in popular tourist sites, resorts, theaters, museums and children's centers. Extraordinary entrance doors offer visitors a warm welcome, with accessibility and ease of use in mind. Unique window and door configurations create a wall of glass for optimal sunlight and expansive views of a lake or golf course. Numerous options and impact performance products help create comfortable, functional spaces, no matter the climate or region.



Restaurant

Kolbe offers one-of-a-kind windows and doors that enhance public dining experiences with views, ventilation, and natural light. Folding and sliding windows and doors also connect interior and exterior spaces incorporating indoor-outdoor and pass-through options. Whether coordinating with a neighboring facade, or renovating an entire shopping district, Kolbe's expansive openings products are ideal for connecting with the outdoors.



Multi-Family/Mixed Use

Kolbe offers a variety of window and door products to meet the needs of multi-use spaces. Known for strength, performance and ease-of-installation, Kolbe's Forgent Series is an ideal choice for multi-family and mixed use projects. Designed for long-term durability, these energy efficient windows and doors provide comfortable spaces, for living, working, shopping, dining and more.



Kolbe's performance capabilities and historical replication expertise helped transform **Mount Vernon High School** into a modern learning environment with XL daylight openings. The 100-year-old masonry school's primary building, 'Old Main', was renovated to provide new instructional and support spaces while maintaining the Collegiate Gothic design of the structure. Energy-efficient Ultra Series Sterling double hung windows offer enhanced performance and a luxurious, all-wood appearance with patented interior wood covers and balances.



WORSHIP



Photos © Edward C. Robison III | Sacred Earth Gallery



The Garden Chapel at Big Cedar Lodge, MO

Nestled into the hillside, this beautifully renovated Gothic style chapel features Heritage Series Old World Classic double and triple hung windows. In addition to superior quality, custom craftsmanship and design excellence, Kolbe provided all of the options needed to capture the historical charm and architectural details, while offering floor-to-ceiling views of the Ozarks. Custom shapes, sizes, and divided lite patterns helped create one-of-a-kind openings that flood the interior with light and beauty.





Following a fire in 1900, **The Towers** is the only remnant of the Narragansett Pier Casino, a former resort for the social elite. Now functioning as an historic venue for social events, the oceanside building underwent a lengthy renovation process that required the best materials and craftsmanship possible to ensure longevity. To balance the structural updates with the historic nature of the building, 104 of Kolbe's Heritage Series double hung windows and crank-out casements were installed. The traditional styling of the all-wood Mahogany windows with ovolo performance divided lites matches the original character of the structure.



RECREATION

The **Moonlight Basin Golf Clubhouse** boasts unrivaled views of Lone Peak, Fan Mountain and the Beehive Basin. The contemporary architecture stands out from nearby “Mountain” architecture, with massive windows framing the surrounding landscape. Contemporary interiors complement the design with a soft palette, warm colors, diverse textures and custom forged fixtures throughout. Kolbe’s VistaLuxe WD LINE crank-out casements and geometric direct sets have a wood interior that blends with the natural tones, while black exteriors contrast with the wood and stone building materials.





Photo © Markus Spiske | Pexels.com



RESTAURANT



The owners of **Malarkey's Pub & Townies Grill** wanted to bring the sights and sounds of the neighboring park to their customers, without looking out of step with the other historic downtown structures. Kolbe made sure it looked correct, considering performance and aesthetic while meeting the city's requirements. With numerous options for customizing the folding windows to maximize the view of the park, Kolbe also offered a side-retracting screen to keep bugs out. The uniform appearance carries across the entire space and fits well within the neighborhood.





At the **Red Eye Brewing Company**, artisan beer and food are served. This sustainable design project features a wood-burning oven and solar thermal hot water system. Plus, Ultra Series awning windows allow ventilation above the stationary picture windows. A Chutney fluoropolymer finish creates a striking exterior, along with a 3-1/2" flat extruded aluminum casing. The main entrance doors have glass lites and raised panels, as well as custom moulding and commercial hardware. The French doors that open out to the patio feature full glass lites and 1-1/8" wide PDL bars.

MULTI-FAMILY/MIXED USE



A premier apartment community nestled into a Rochester, NY, neighborhood, **Goodman Apartments** offers a vibrant urban living experience. Kolbe's Forgent® Series high performance Glastra® windows offer energy efficiency, and quiet, comfortable living spaces with scenic views of the skyline.

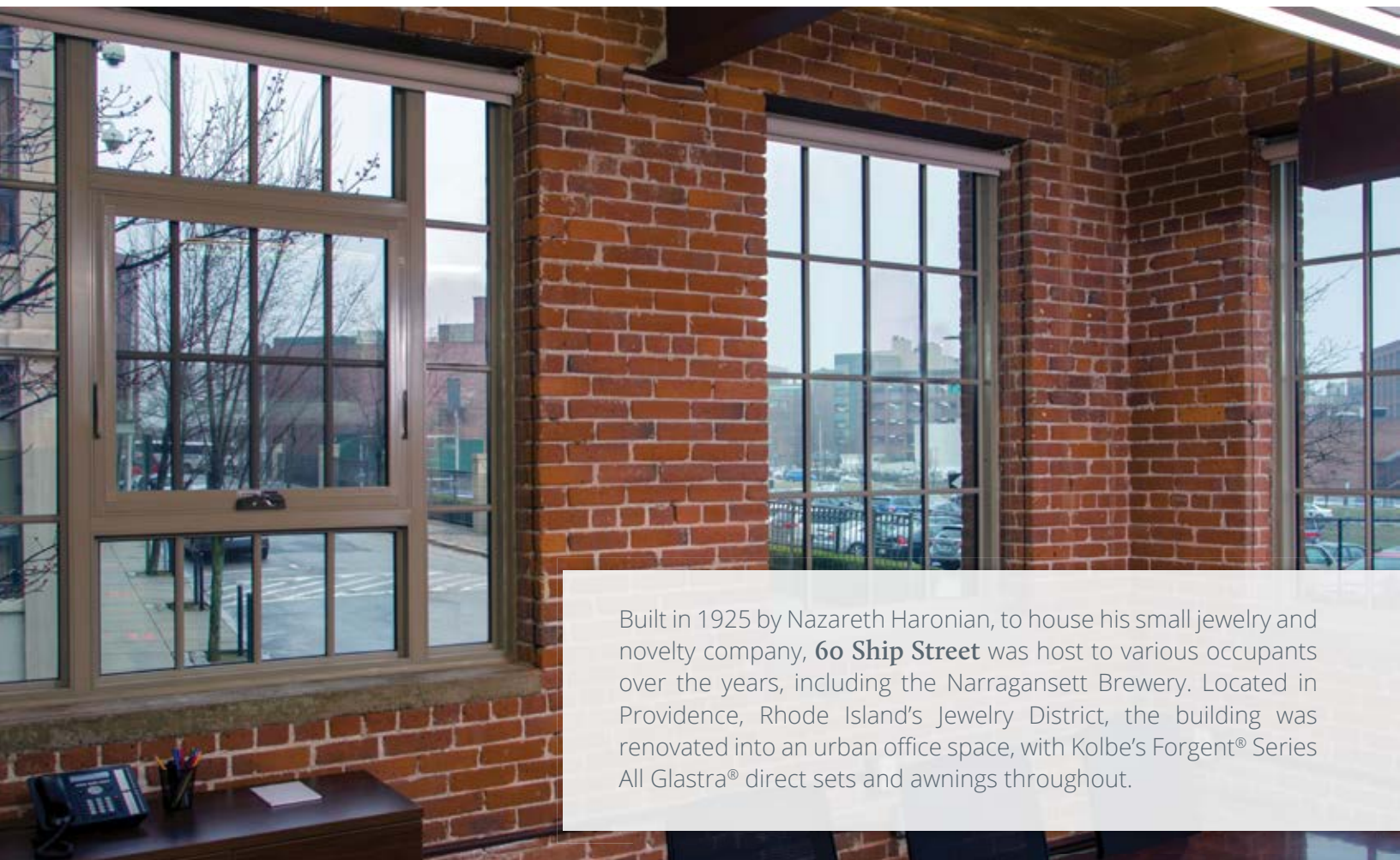


Photos courtesy of North Atlantic Corp.





Photos © Kim Smith



Built in 1925 by Nazareth Haronian, to house his small jewelry and novelty company, **60 Ship Street** was host to various occupants over the years, including the Narragansett Brewery. Located in Providence, Rhode Island's Jewelry District, the building was renovated into an urban office space, with Kolbe's Forgent® Series All Glastra® direct sets and awnings throughout.

Our Product Lines

Kolbe has designed multiple product lines to meet specific architectural and aesthetic goals. Each offers distinct advantages and characteristics, yet remains vastly customizable. Careful design, quality craftsmanship, numerous options, and innovative solutions allow Kolbe® windows and doors to meet historic, functional and performance requirements – with options for energy efficiency, sustainability, impact resistance and universal design.

Learn more about Kolbe's products, options, and contributions to commercial building projects.





Photo © Dror Baldinger, FAIA

Ultra Series

The Ultra Series was designed for versatility, durability and performance. Perfect for traditional to modern architectural designs, it can mimic the details of wood windows and doors with numerous options for personalization. From larger daylight openings and spacious entryways, to indoor-outdoor and pass-through solutions, the Ultra Series offers style, performance and functionality for any type of commercial project.

The Ultra Series offers:

- Durable extruded aluminum exterior in 50+ standard colors & finishes, plus custom hues
- Warm wood interior in familiar to exotic species, with 20+ standard pre-finishes, plus custom finishes
- Versatile styling, from traditional to modern architectural details
- Enhanced energy efficiency & impact performance options to meet climate demands
- Traditional design aesthetics with ability to replicate intricate architectural & historic details
- Divided lite profiles & patterns
- Exterior brickmoulds & casings in various widths & styles
- Glazing options for enhanced energy efficiency, decorative & specialty glass needs
- Hardware options & finishes to match any décor
- Automation options for ease of operation

Windows

- Crank-out casements
- Push-out casements
- Crank-out awnings
- Push-out awnings
- Sterling double hungs
- Sliding windows
- Direct sets (corner, radius & geometric)
- Folding windows

Doors

- Sliding doors
- Multi-slide doors
- TerraSpan® lift & slide doors
- Folding doors
- Swinging doors
- Entrance doors
- Pivot doors
- Commercial doors

NOTE: Impact performance options are not available for all products.
Please consult your local Kolbe dealer for specific product details and configurations.



VistaLuxe® Collection

Kolbe's VistaLuxe Collection is ideal for contemporary designs that utilize clean lines and large expanses of glass. The VistaLuxe WD LINE offers versatility, with extruded aluminum exteriors and warm wood interiors, while the VistaLuxe AL LINE offers thermally broken, all-aluminum windows and doors. The collection's design flexibility, functionality, and endless style choices are ideal for any modern aesthetic. Ask about our impact performance capabilities.

The VistaLuxe WD LINE offers:

- Industry-leading frame-to-daylight-opening ratio for an increased viewing area
- Extruded aluminum exterior with 50+ standard colors & finishes, as well as custom hues
- Warm wood interior in familiar to exotic species, with 20+ standard pre-finishes, plus custom colors
- Consistent profiles offered in two styles with square interiors & exteriors
- The look of steel, used as an alternative to or in conjunction with steel products
- Precise horizontal & vertical alignment on mullied windows with glass in the same pane
- Numerous hardware styles & finishes

Windows

- Crank-out casements
- Crank-out awnings
- Direct sets
(corner, radius & geometric)
- Sliding windows
- Folding windows

Doors

- Swinging doors
- Sliding doors
- Multi-slide doors
- Folding doors
- Pivot doors

NOTE: Impact performance options are not available for all products. Please consult your local Kolbe dealer for specific product details and configurations.



The VistaLuxe AL LINE offers:

- All-aluminum European-styled interiors & exteriors with 4 powder-coated + 3 anodized finishes
- Thermally-broken to enhance energy performance
- Coordinated profiles with square interiors & exteriors for a sleek, strong design aesthetic
- Larger expanses of glass in varied configurations for floor-to-ceiling views
- Streamlined, unobtrusive hardware

Kolbe's VistaLuxe AL LINE is manufactured using a selection of Reynaers Aluminium extrusions and system profiles.

Windows

- Push-out casements
- Inswing casements
- Awnings
- Tilt-turns & Turn-tilts
- Hoppers
- Direct sets
- Corner direct sets

MODELS:

(CS77, SL38, ML8)
 (SL38, ML8)
 (SL38, ML8, CS77 – Automated)
 (SL38, ML8)
 (SL38, ML8)
 (SL38, CS77, ML8)
 (SL38, CS77, ML8)

Doors

- Multi-slide doors
- Hi-Finity® multi-slide doors
- Lift & slide doors
- Folding doors
- Swinging doors
- Pivot doors

MODELS:

(SP68)
 (CP155, MP)
 (CF77)
 (CS77, ML8)
 (CS77, ML8, ML8-XL)

Façades

- Curtain wall

(CW50)

NOTE: Impact performance options are not available for all products. Please consult your local Kolbe dealer for specific product details and configurations.



Photo © Kenneth M. Wyner

Heritage Series

Add Old World charm and character with the warmth of wood. Carefully crafted with a wood interior and exterior, Heritage Series windows and doors make it possible to create architecturally intricate and historically accurate details. Kolbe's wood products are ideal for commercial restoration or replication projects, blending traditional design aesthetics with advanced technology, functionality, and optimal energy efficiency.

The Heritage Series offers:

- Wood exterior available in unfinished, primed, or painted with our K-Kron II finish, for ultimate flexibility
- Exterior K-Kron II paint finish offered in 40+ standard colors, plus custom hues
- Wood interior in familiar to exotic species, with 20+ standard pre-finishes, plus custom finishes
- Traditional design aesthetics with ability to replicate intricate architectural & historic details
- Divided lite profiles & patterns, including true divided lites
- Exterior brickmoulds & casings in various widths & styles
- Glazing options for enhanced energy efficiency, decorative & specialty glass needs
- Hardware options & finishes to match any décor
- Old World Classic double hungs with brass chains & pulleys for authenticity

Windows

- Crank-out casements
- Push-out casements
- Inswing casements
- Crank-out awnings
- Push-out awnings
- Double hungs
(Traditional, Sterling, XL Sterling,
& Old World Classic)
- Folding windows
- Radius windows
- Geometric windows

Doors

- Sliding doors
- Folding doors
- Swinging doors
- Entrance doors
- Commercial doors

NOTE: Traditional or enhanced glazing options available. Please consult your local Kolbe dealer for specific product details and configurations.



Photo courtesy of Bryan Walters | Yellow Tree Construction Services

THE FORGENT® SERIES

Kolbe's Forgent Series windows and doors feature a proprietary Glastra® material and thoughtful design, making them simple, convenient and easy to install. Designed for durability and jobsite efficiency, Forgent Series products are a perfect choice for new construction or replacement commercial projects. These energy-efficient windows and doors are available with glass options for high-noise areas that help create quieter, more comfortable spaces.

The Forgent Series offers:

- Innovative Glastra® material for low maintenance & durability
- Glastra exterior with Glastra or wood interior in a selection of popular colors
- An advanced ladder design with multiple chambers for high performance & strength
- Welded sash & frame with AccuForge™ technology for a smooth, air & watertight seam
- Energy efficiency & impact performance options to meet local climate demands
- Ability to meet or exceed ENERGY STAR® requirements in the U.S.
- Preparation available for Packaged Terminal Air Conditioner (PTAC) units
- Three convenient certified installation methods: integral nailing fin, installation clips, & screw through frame

Windows

All Glastra or Glastra/Wood

- Crank-out casements
- Crank-out awnings
- Double hungs
- Sliding windows
- Direct sets
(rectangular, geometric & radius)

Complementary Doors

Select doors designed to complement Forgent Series products

- Swinging doors
- Sliding doors
- Multi-slide doors



Forgent Series manufacturing byproducts are recycled for use in other industries.

NOTE: Impact performance options are not available for all products.
Please consult your local Kolbe dealer for specific product details and configurations.



Style & Design Options

Kolbe's endless variety of options allow you to choose wood species, divided lite patterns, sizes, shapes, interior and exterior finishes, hardware, and more – or create an even more personalized design with our custom solutions.

Photo courtesy of 21c Museum Hotels

Glass

- Single, double & triple pane
- Various Low-E coatings
- Specialty, privacy & smart glass options
- Neat+™
- Laminated
- Impact (see pg. 27)
- Bird glass

Divided Lites

- Performance divided lites (beveled, ovolo & square profiles)
- True divided lites (beveled & ovolo profiles)
- Grilles-in-the-airspace

Accessories

- Brickmoulds & casings
- Sill nosing & drip cap
- Custom profiles

Insect Screens

- Retractable
- Pleated sliding
- BetterVue® mesh
- UltraVue® mesh
- Aluminum mesh
- Polyester mesh
- WaterShed™ Technology

Hardware

Kolbe's windows and doors are available with numerous hardware styles and finishes to complement décor and match the aesthetic of any design. A variety of commercial-grade hinges are available in select finishes, while specialized hardware and larger levers are available for ease of use.

Custodial Locks

Available on Ultra Series and Heritage Series Sterling double hung* windows, custodial locks feature a removable key that acts as a handle when operating; a 90-degree turn locks or unlocks the sash. Custodial locking handles are available for crank-out casements and awnings.



Shown on double hung

Automation

Kolbe integrates advanced technology into select products, putting the control at your fingertips – with remotes, keypads, touch screens, and other devices. The easy-to-use operating system enhances indoor-outdoor and independent living by allowing the user to open and close windows and doors at the touch of a button.

Automation options are not available for all products. For specific information on the products that meet automation requirements, please contact your local distributor.

Sills

Kolbe offers various sill options for folding and sliding windows and doors, allowing smooth operation and seamless passage between indoor and outdoor environments. ADA-compliant sills for swing doors create a flush surface for universal design projects.

Visit kolbewindows.com to see more solutions for style & design.

Neat+ is a trademark of Cardinal Glass Industries, Inc.

Finish Options

Available for VistaLuxe WD LINE,
Ultra Series & Heritage Series



© Warren Jagger Photography

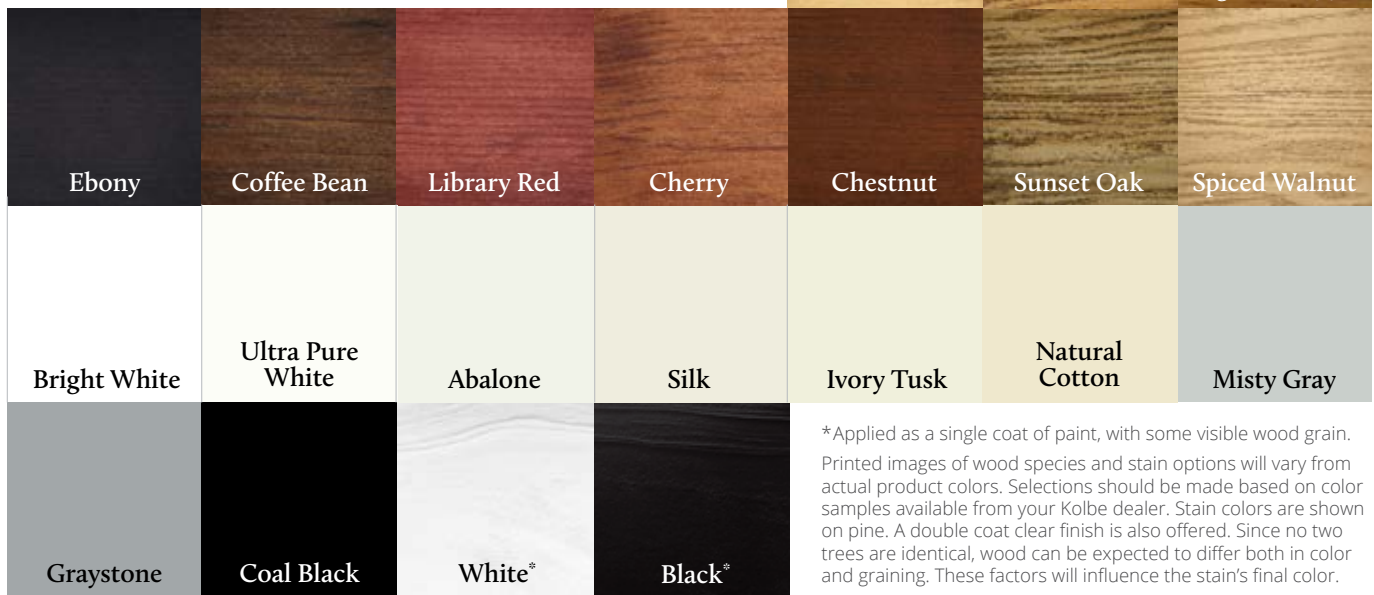
Interior Wood Species

In addition to the standard pine, most of Kolbe's wood windows and doors can be constructed of other optional wood species that enhance their look. Pine and other wood species are sourced from managed forests. Forest Stewardship Council® (FSC®)-certified wood species are also available to help support responsible forestry (FSC® license code FSC®-C019541).



Interior Wood Finishes

For units that are ready to install upon delivery, most of Kolbe's wood windows and doors can be prefinished on the interior with one of the water-based stains or paints shown. Stained units are given two coats of satin clear finish. Because our interior finishes are water-based, low-VOC stains and paints, you can rest assured you've made an environmentally conscious decision. Custom colors are also available.



*Applied as a single coat of paint, with some visible wood grain. Printed images of wood species and stain options will vary from actual product colors. Selections should be made based on color samples available from your Kolbe dealer. Stain colors are shown on pine. A double coat clear finish is also offered. Since no two trees are identical, wood can be expected to differ both in color and graining. These factors will influence the stain's final color.

Color-matched interior paint is available through any Sherwin-Williams retail store in the United States and Canada. Kolbe's color formula is in their National Account System.

Some options for our products may have limited color offerings or may incur a nominal charge. Check with your Kolbe dealer for further details on pricing and availability.

Exterior Colors & Finishes

Kolbe's aluminum-clad VistaLuxe WD LINE and Ultra Series products can be finished with a 70% PVDF fluoropolymer coating – ideal for durability and resistance to chemicals, abrasion, corrosion and weathering. In addition to the standard palette, custom colors can be specified, as well as Anodized aluminum and Mica** fluoropolymer finishes. Durable K-Kron II finishes are available for Heritage Series all-wood windows and doors.

					White	Cloud	Ultra Pure White
					Abalone	Alabaster	Camel
Mudpie	Nutmeg	Khaki	Sahara	Beige	Natural Cotton	Spiced Vinegar	
Gingersnap	Truffle	Bronze*	Rustic	Shadow	Shale	Smokestack	
Corbeau*	Eclipse*	Tungsten*	Steel Gray	Slate	Castlerock	Timberwolf	
Coal Black*	Onyx*	Midnight*	Sapphire	Coastal Storm	Lunar	Emerald Isle	
Cider	Copper Canyon	Basil	Mystic Ivy	Mediterranean	Green Tea Leaf	Hartford Green	
Chutney	Roma	Maize	Custom Colors Available				
Galaxy Silver Mica**	Silverstorm Mica**	Cosmic Gray Mica**	Night Sky Mica**	Mica**	Anodized	Clear Anodized	Champagne Anodized
						Black Anodized	Dark Bronze Anodized

* Heritage Series products are not available in Bronze, Onyx, Coal Black, Midnight, Corbeau, Tungsten, Eclipse, Mica or Anodized finishes.

Not all colors are available for all products. Some options for our products may have limited color offerings or may incur a nominal charge. Check with your Kolbe dealer for further details on pricing and availability. Printed images of exterior finishes may vary slightly from actual colors. Selections should be made based on actual color samples available from your Kolbe dealer.

** Mica finishes are 70% PVDF fluoropolymer as standard. Fluoropolymer coatings meet performance requirements of AAMA-2605 and are recommended for coastal and heavy salt concentration areas. See your Kolbe dealer for details.

There is a "color range" with anodized colors. That is, there is an acceptable "light" to "dark" color range that can be experienced on any job. According to AAMA 611-98 specifications, Section 8.3, the range may be up to 5 Delta E's. We can provide from our anodized vendor color samples of this color range if requested. The color range is due to numerous variables which include (but are not limited to) the shape of the parts, alloy variations and time in the anodizing process. This could mean that a sash part may appear slightly different in color than a frame part. This is/will be acceptable. Even the samples that may be provided may vary from the final product due to the variables. You must be aware of this as this will be considered acceptable.

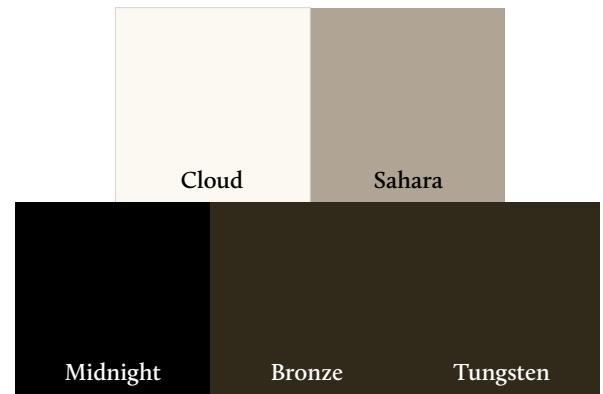
Finish Options cont.

Available for Forgent Series



Forgent Series offers popular exterior and interior finishes to coordinate with hardware selection, trim and décor. The Cloud and Sahara colors are integral to the Glastra® material, while Bronze, Midnight and Tungsten can be applied in various combinations, as shown in the chart below.

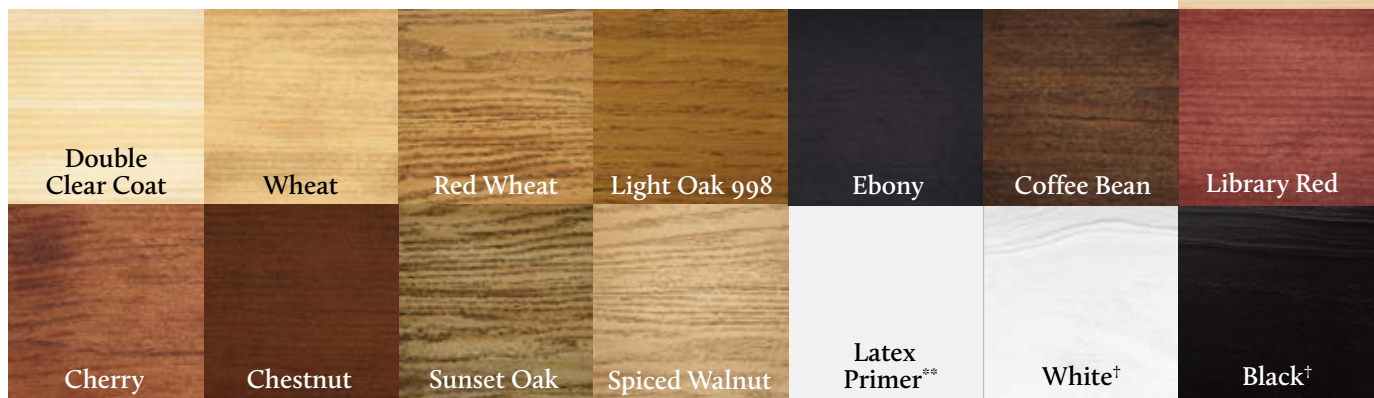
		Interior				
		CLOUD	SAHARA	BRONZE	MIDNIGHT	WOOD
Exterior	CLOUD	•				•
	SAHARA		•			•
	BRONZE	•		•		•
	MIDNIGHT	•			•	•
	TUNGSTEN	•				•



NOTE: Tungsten is available as an exterior finish only. Ask your Kolbe dealer for details.

Interior Wood Finishes – Glastra/Wood Units

Forgent Series Glastra/Wood windows and complementary doors are offered with a Pine interior. For units that are ready to install upon delivery, Forgent Series products can be prefinished on the interior with one of the water-based, low-VOC stains or paints shown. Stained units are given two coats of satin finish clear sealer.



*All units supplied with unfinished pine interiors must be finished in the field.
 **Latex primer is not a final finish.
 †Applied as a single coat of paint, with some visible wood grain.

Printed images of wood species and stain options will vary from actual product colors. Selections should be made based on color samples available from your Kolbe dealer. Stain colors are shown on Pine. Since no two trees are identical, wood can be expected to differ both in color and graining. These factors will influence the stain's final color. Color-matched interior paint is available through any Sherwin-Williams retail store in the United States and Canada. Kolbe's color formula is in their National Account System.

Finish Options cont.

Available for VistaLuxe AL LINE



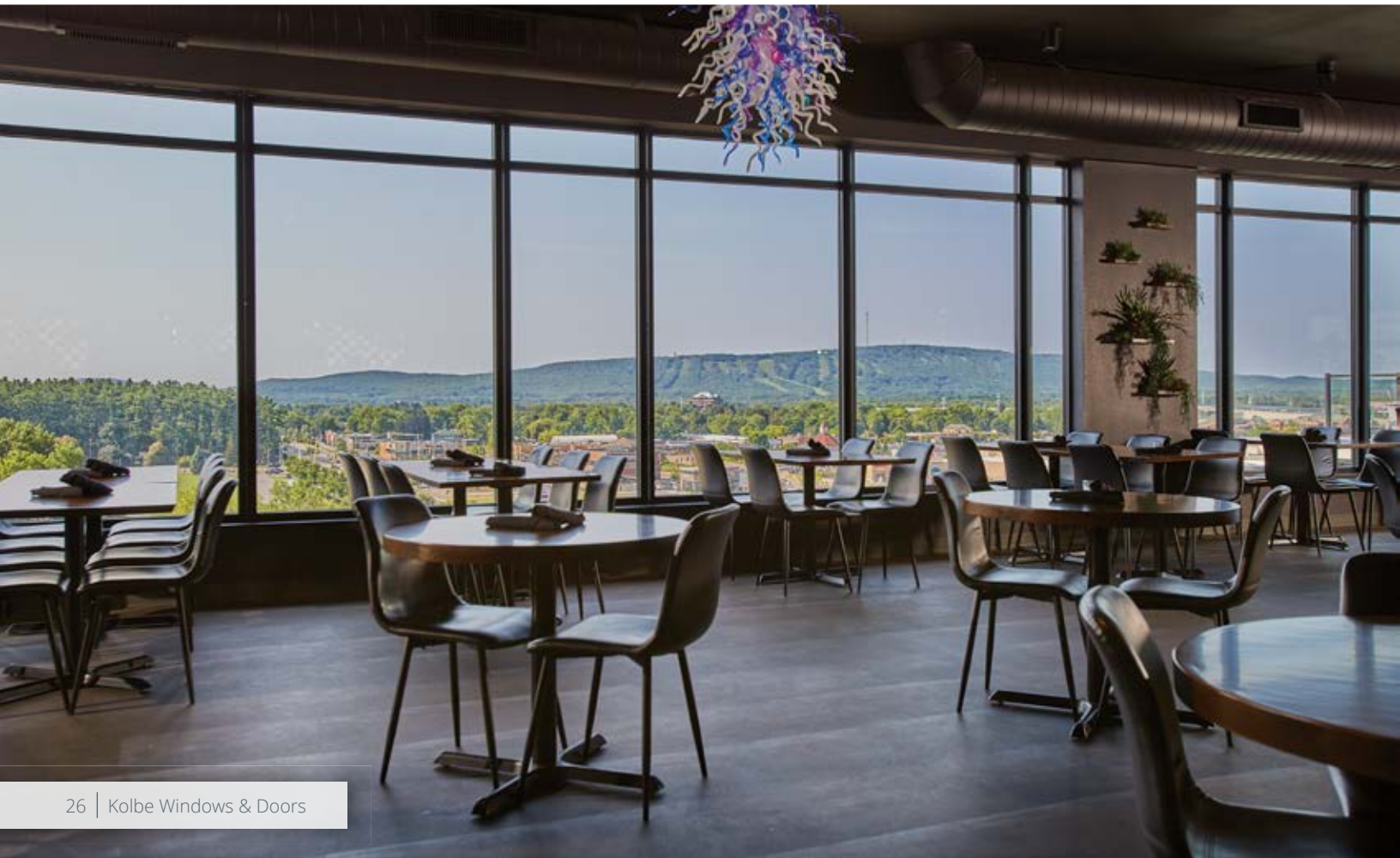
Interior & Exterior Finishes

The VistaLuxe AL LINE offers sophisticated finishes that enhance the lifelong beauty of your windows and doors. Four powder-coated and three anodized surface treatments are available, for protection of the aluminum as well as for design aesthetic.

Printed images of interior and exterior finishes will vary from actual colors. Selections should be made based on color samples available from your Kolbe dealer.



There is a "color range" with anodized colors. That is, there is an acceptable "light" to "dark" color range that can be experienced on any job. According to AAMA 611-98 specifications, Section 8.3, the range may be up to 5 Delta E's. We can provide from our anodized vendor color samples of this color range if requested. The color range is due to numerous variables which include (but are not limited to) the shape of the parts, alloy variations and time in the anodizing process. This could mean that a sash part may appear slightly different in color than a frame part. This is/will be acceptable. Even the samples that may be provided may vary from the final product due to the variables. You must be aware of this as this will be considered acceptable.





© Ryan Arthur Ross Garrenton

Window Opening Control Devices (WOCD)

Kolbe's Window Opening Control Devices, or WOCDs, restrict the size of the open window area to less than 4 inches, and feature a limit release mechanism to allow for emergency escape. These devices allow the window to latch into place at a predetermined position and automatically re-latch when closed.

Available for select:

- Double hungs
- Casements
- Sliding windows



Shown on casement



Shown on double hung

NOTE: This device meets the stringent safety requirement of ASTM F2090 if applied per recommendations.

WOCDs are not available for all product lines. See Kolbe dealer for details.

Impact Performance

Kolbe's impact performance products are specially designed to withstand hurricane force winds and flying debris, and are independently tested to meet or exceed the strict building codes of coastal regions. There are no unsightly rods or extra locks to fasten, so Kolbe's impact-certified products offer the same beautiful appearance as non-impact products.



© Warren Jagger Photography

Kolbe's impact-certified products offer:

- Enhanced performance & energy efficiency
- Zone 3, Zone 4 and/or HVHZ protection
- Increased security & peace of mind
- Reduced heating & cooling costs
- Beautiful appearance without additional support
- Stable, air & watertight environments
- Quieter, more comfortable interior spaces

NOTE: Impact options are not available for all products. Please ask your dealer for more information.

ENERGY STAR®

ENERGY STAR® – United States

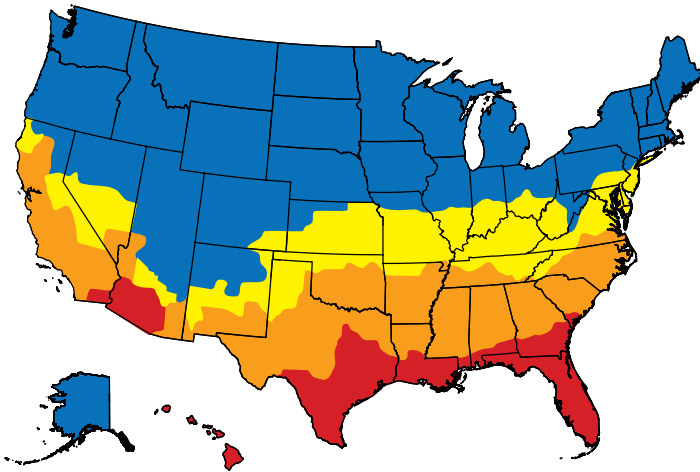


ENERGY STAR is a government-regulated program that was created by the Environmental Protection Agency (EPA), and the U.S. Department of Energy (DOE), to help consumers quickly and easily identify energy saving products. The ENERGY STAR

program uses energy values obtained by window and door manufacturers through the National Fenestration Rating Council (NFRC) program. NFRC ratings are based on the energy performance of the total window or door – both glass and frame.

The ENERGY STAR program for the United States divides the nation into four separate climate zones – Northern, North-Central, South-Central, and Southern.

The performance criteria that needs to be met in order to be ENERGY STAR compliant in a specific climate zone (effective October 23, 2023) is shown in the charts provided.



- Northern
Mostly Heating
- South-Central
Heating & Cooling
- North-Central
Heating & Cooling
- Southern
Mostly Cooling

2023 ENERGY STAR 7.0 Qualification Criteria for Windows*

Climate Zone U.S.	U-Factor ¹	SHGC ²	
Northern**	≤ 0.22	≥ 0.17	Prescriptive
	= 0.23	≥ 0.35	Equivalent Energy Performance
	= 0.24		
	= 0.25		
	= 0.26		
North-Central	≤ 0.25	≤ 0.40	
South-Central	≤ 0.28	≤ 0.23	
Southern	≤ 0.32	≤ 0.23	

Air leakage for windows ≤ 0.3 cfm/ft²

¹ Btu/h ft² · °F

² Solar Heat Gain Coefficient

* The effective date for the Northern Zone prescriptive and equivalent energy performance criteria for windows was September 7, 2023. North-Central, South-Central, and Southern criteria also follows 2023 guidelines.

** Northern zone windows can meet prescriptive (1st row) or alternative energy performance (2nd through 5th rows) criteria to qualify for ENERGY STAR.

2023 ENERGY STAR 7.0 Qualification Criteria for Doors

Glazing Level	U-Factor ¹	SHGC ²
Opaque	≤ 0.17	No Rating
≤ 1/2-Lite	≤ 0.23	≤ 0.23
> 1/2-Lite	≤ 0.26	Northern North-Central ≤ 0.40
	≤ 0.28	Southern South-Central ≤ 0.23

Air leakage for sliding doors ≤ 0.3 cfm/ft²

Air leakage for swinging doors ≤ 0.5 cfm/ft²

California's Title 24

Many of Kolbe's windows and doors can meet the strict California Title 24 Building Energy Efficiency Standards. Talk to your dealer about products with glass options that help meet these stringent energy efficiency requirements.

For energy performance data, visit:

▶ kolbewindows.com/energy

Kolbe demonstrates a commitment to providing accurate energy data by having products independently simulated, tested, inspected and listed in the NFRC certification program, and making that data available at kolbewindows.com and on window labels.

Energy performance data and air, water, structural data is updated on a continuous basis. For the most current information, contact your local Kolbe dealer.

ENERGY STAR® – Canada

Fenestration products may comply for Canada’s ENERGY STAR program based on these compliance paths: their total U-factor, their Energy Rating (ER), or both. The Energy Rating is based on a product’s overall performance based on three criteria: (1) solar heat gain, (2) U-factor, and (3) average air tightness. The higher the ER number, the better the product’s thermal performance.

The U-factor and ER criteria for Canada is shown in the chart provided. For Kolbe products that qualify for Canada’s ENERGY STAR Program, search our website at kolbewindows.com/energy-data.



2023 ENERGY STAR 7.0 Qualification Criteria for Windows & Doors in Canada†

Maximum U-Factor (Btu/h*ft²°F)	OR	Minimum Energy Rating (ER)
0.21		34

Maximum U-Factor Equivalency

(Btu/h*ft²°F)	(W/m²K)
0.21	1.22

Average Air Tightness Requirement

cfm/ft² @1.57 psf	L/s/m² @75 Pa
≤0.30	≤1.5

† Criteria shown applies to windows, sliding doors, and swinging doors.

Energy Performance Terminology

- ▶ U-Factor refers to a measure of heat transfer through the window or door unit. A lower U-factor means less heat escapes during winter weather, thus reducing heating costs in cold climates.
- ▶ R-Value refers to resistance to heat flow. A high R-value indicates that a window or door has good heat insulating properties.
- ▶ Solar Heat Gain Coefficient (SHGC) is a measure of how much solar energy is passing through the unit’s glass. The lower a window or door unit’s SHGC, the less solar heat is transmitted into a room, thus allowing for lower cooling bills in hot climates.
- ▶ Visible Transmittance (VT) is a measure of the portion of visible light that passes through a window or door. The higher a window or door unit’s VT Total, the more visible light is transmitted into a room. This value is influenced by both the glass selection and by the ratio of glazing and frame area.

Kolbe demonstrates a commitment to providing accurate energy data by having products independently simulated, tested, inspected and listed in the NFRC certification program, and making that data available at kolbewindows.com and on window labels.

Energy performance data and air, water, structural data is updated on a continuous basis. For the most current information, contact your local Kolbe dealer.



Professional Tools

Kolbe prides itself on offering the tools and resources architects, builders and other industry professionals need to complete their projects. From product specifications and 3D models to continuing education courses and webinars, Kolbe supports all of your project needs.

Architect Library

Kolbe's Architect Library is the main resource for specifying windows and doors. Search detailed product information, including:

- Cross section drawings
- Elevation charts
- 3D Revit® models
- CSI specifications
- Installation instructions

Additional resources include:

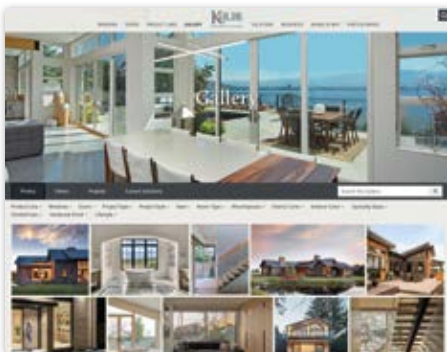
- Door configurations
- Clear openings
- Care & maintenance guide
- Acoustic data
- Energy performance
- Performance class & grade
- Product brochures
- Color & design samples
- Warranties

AIA/CES Courses

As a Registered AIA Continuing Education Services (CES) provider, Kolbe provides AIA Learning Units (LU) and/or Health, Safety & Welfare (HSW) credits as required per state and/or professional memberships to meet yearly requirements.

Inspiration Gallery

Browse through photos, videos, project profiles and custom solutions.



kolbewindows.com/gallery

Virtual Showrooms

Experience Kolbe's full capabilities through two interactive showrooms.



Showroom Tour

Browse through 26 displays to see Kolbe's innovative products and options in unique configurations.

kolbewindows.com/virtual-showroom



Exhibit Tour

Explore Kolbe's booth from a previous trade show, filled with trendy solutions for modern living.



Commercial Project List

Assisted Living Facilities

St. Francis Retirement Center	Redwood City	CA
Haven Hospice	Jacksonville	FL
Masonic Homes Assisted Living	Louisville	KY
Sam Swope Care Center	Louisville	KY
Kalkaska Memorial Health Center	Kalkaska	MI
Parker at Monroe	Monroe	NJ
Reformed Ministries Assisted Living	Old Bridge	NJ
Canterbury Village	Orange	NJ
Parker Monroe Assisted Living	Cranbury	NY
Hospice of Lancaster	Lancaster	PA
Spring Arbor Assisted Living	Leesburg	VA
Spring Arbor Assisted Living	Winchester	VA
Living Oaks Assisted Living	Iola	WI
Stoney River Assisted Living	Marshfield	WI
Greenbrier Manor Assisted Living	Lewisburg	WV

Banks & Financial Institutions

Ameriprise Financial	Tuscaloosa	AL
First Republic Bank	Los Gatos	CA
Weston Savings Bank	Weston	CT
Ameris Bank	Jacksonville	FL
First Landmark Bank	Marietta	GA
Creston National Bank	Creston	IA
American Charter Bank	Elk Grove Village	IL
Old Plank Trail Bank	New Lenox	IL
Hingham Savings Bank	Nantucket	MA
Fifth Third Bank	Elk Rapids	MI
Fifth Third Bank	Suttons Bay	MI
Chase Bank	Montclair	NJ
Chase Bank	Sussex	NJ
BNY Mellon	New York	NY
Summit Bank	multiple loc.	NY
Fulton Bank	Lititz	PA
Omni American Bank	Grapevine	TX
First Citizens Bank Branches (100+)	Southeastern	US
Wheat First Securities	Leesburg	VA
Horicon Bank	Oshkosh	WI
Peoples State Bank	Wausau	WI
Meeteetse Bank Building	Meeteetse	WY

Educational Institutions, Museums & Art Centers

University of Alabama	Tuscaloosa	AL
Arizona State University	Tempe	AZ
MacDonald Bldg./Dawson Cole Gtry.	Carmel by the Sea	CA
Cate School	Carpinteria	CA
St. Mary's College	Moraga	CA
Children's Center of the Stanford Comm.	Palo Alto	CA
The Spring Hill School	Redwood City	CA
Sierra Madre Elementary School	Sierra Madre	CA
Central Middle School Gym	San Carlos	CA
Reagan Ranch Center	Santa Barbara	CA
St. Mary's Academy	Cherry Hills	CO
Tivoli Student Union	Denver	CO
Durango Discovery Museum	Durango	CO
Union Colony School	Evans	CO
Bacon Elementary School	Fort Collins	CO
Blevins Junior High School	Fort Collins	CO
Colorado State University	Fort Collins	CO
Heath Junior High	Greeley	CO
Timnath Elementary School	Timnath	CO

Spanish Peaks Library	Walsenburg	CO
Yale University	New Haven	CT
Connecticut College	New London	CT
Washington Lab School	Washington	DC
Flagler College	St. Augustine	FL
Lightener Museum	St. Augustine	FL
St. August. Pirate & Treasure Museum	St. Augustine	FL
University of Georgia	Athens	GA
Georgia Tech	Atlanta	GA
Oatland Island Wildlife Center	Savannah	GA
Abraham Baldwin Agricultural College	Tifton	GA
University of Iowa	Iowa City	IA
Four Rivers Environmental Edu. Ctr.	Channahon	IL
Loyola University	Chicago	IL
University of Chicago	Chicago	IL
Max McGraw Wildlife Foundation	Dundee	IL
DePauw University	Greencastle	IN
Memorial Student Union/Hoover Hall		
University of Kentucky	Lexington	KY
Thayer Academy	Braintree	MA
Berkley School of Music Dormitory	Boston	MA
Harvard University	Cambridge	MA
Middlesex Community College	Lowell	MA
Annapolis Elementary School	Annapolis	MD
St. John's College Library	Annapolis	MD
Johns Hopkins University	Baltimore	MD
Loyola College	Baltimore	MD
University of Maryland	College Park	MD
St. Mary's College of Maryland	St. Mary's City	MD
Lighthouse Youth Center	Elk Rapids	MI
Betsy Lane Oliver Art Center	Frankfort	MI
Ramsdell Theatre	Manistee	MI
University of Minnesota	Minneapolis	MN
Art Space Northern Warehouse	St. Paul	MN
Pembroke Private School	Kansas City	MO
Northwest MS Community College	Senatobia	MS
Great Falls High School	Great Falls	MT
University of NC Asheville	Asheville	NC
University of NC Chapel Hill	Chapel Hill	NC
Wicker School	Sanford	NC
Blair Academy	Blairstown	NJ
The Lawrenceville School	Lawrenceville	NJ
NJ Institute of Technology	Newark	NJ
Lawrenceville School Campus	Pennington	NJ
Princeton University	Princeton	NJ
Pease Library	Ridgewood	NJ
Kean University	Union	NJ
The Pratt Institute	Brooklyn	NY
Eden Elementary School	Eden	NY
Governor's Island Welcome Center	New York	NY
Grant's Tomb	New York	NY
SUNY College of Environmental Science & Forestry (ESF)'s Marshall Hall	Syracuse	NY
Syracuse University	Syracuse	NY
Westhampton Free Library	Westhampton Beach	NY
YWCA	White Plains	NY
Ohio University	Athens	OH
Miami University	Oxford	OH
Steele Mansion	Painesville	OH
Alton Mill Arts Centre	Alton	ON

Educational Institutions, Museums & Art Centers, cont.

Guelph Civic Museum	Guelph	ON
Laurentian University	Sudbury	ON
Upper Canada College	Toronto	ON
Trillium Farm Old School Building	Corvallis	OR
University of Oregon	Eugene	OR
Lebanon Valley College	Anncville	PA
Bryn Mawr College	Bryn Mawr	PA
Dickinson College	Carlisle	PA
Gettysburg College	Gettysburg	PA
Haverford College	Haverford	PA
Indiana University of PA	Indiana	PA
Thaddeus Stevens College of Tech.	Lancaster	PA
Haverford College	Norristown	PA
University of Pennsylvania	Philadelphia	PA
Rosemont College	Rosemont	PA
Swarthmore College	Swarthmore	PA
Villanova University	Villanova	PA
Tanglewood – Home of West Chester University President	West Chester	PA
Hope High School	Providence	RI
Rhode Island School of Design	Providence	RI
Clemson University	Clemson	SC
Estill Library	Estill	SC
Redlin Art Center	Watertown	SD
Vanderbilt University	Nashville	TN
Austin Community College (ACC) Rio Grande Campus Main Bldg.	Austin	TX
Southern Methodist University	Dallas	TX
Galveston Art Center	Galveston	TX
Virginia Tech	Blacksburg	VA
Jefferson School City Center	Charlottesville	VA
University of Virginia	Charlottesville	VA
Chatham Hall	Chatham	VA
Longwood College	Farmville	VA
Randolph Macon Academy	Front Royal	VA
Washington & Lee	Lexington	VA
Middleburg Library	Middleburg	VA
4-H Center Headquarters	Richmond	VA
Hollins College	Roanoke	VA
Susquehanna University	Sellingsgrove	VA
William & Mary College	Williamsburg	VA
Middleburg Library	Middleburg	VA
Newport Way Library	Bellevue	WA
Robert Frost Elementary School	Kirkland	WA
Lincoln High School	Seattle	WA
Mount Vernon High School	Seattle	WA
Seattle Aquarium	Seattle	WA
Queen Anne Elementary School	Seattle	WA
Hatley Branch Library	Hatley	WI
Necedah Public Library	Necedah	WI
The Grand Theater	Wausau	WI
Leigh Yawkey Woodson Art Museum	Wausau	WI
Carnegie Hall	Lewisburg	WV
University of Wyoming	Laramie	WY

Golf, Country, Tennis, Yacht & Ski Clubs

Quail Lodge Golf Club	Carmel Valley	CA
Angeles National Golf Club House	Sunland	CA

La Rinconada Country Club	Los Gatos	CA
Noroton Yacht Club	Noroton	CT
Jupiter Island Club	Jupiter	FL
WaterColor Beach Club	WaterColor	FL
Capital City Club	Atlanta	GA
Bolingbrook Golf Club	Bolingbrook	IL
Horseshoe Bend Golf Club	Atlanta	GA
Frederica Golf Club	Sea Island	GA
Martha's Vineyard Golf Club House	Edgartown	MA
Rolling Road Country Club	Baltimore	MD
Harborview Marina & Yacht Club	Baltimore	MD
Lakewood Country Club	Rockville	MD
Norbeck Country Club	Rockville	MD
Baltimore Country Club	Timonium	MD
Crystal Downs Club House	Crystal Lake	MI
Crystal Downs Golf Shop	Frankfurt	MI
Grand Traverse Yacht Club	Traverse City	MI
Yellowstone Club Sales Center	Big Sky	MT
Coral Bay Clubhouse	Atlantic Beach	NC
Ridgewood Country Club	Ridgewood	NJ
Barrie Country Club	Barrie	ON
Mad River Golf Club	Creemore	ON
Ovinbyrd Golf Club	Muskoka	ON
Otter Creek Golf Club	Otterville	ON
Rosedale Golf Club	Toronto	ON
Weston Golf Club	Toronto	ON
Merion Golf Club	Ardmore	PA
Carnegie Abbey Club House & Condo	Jamestown	RI
Atlantic Beach Club	Middletown	RI
Carnegie Abbey Golf Course	Middletown	RI
Clam Bake Cub	Middletown	RI
Rose Hill Tennis Center	Bluffton	SC
Glenmore Country Club	Charlottesville	VA
Greensprings Country Club	Williamsburg	VA

Government & Parks

Air National Guard	Birmingham	AL
Flagstaff Court House	Flagstaff	AZ
Fernie City Hall	Fernie	BC
Cayucos Veteran's Memorial Hall	Cayucos	CA
Crocker Guard Station	Lake Davis	CA
Morehead Building	Petaluma	CA
CA State Fish & Game Office & Lab	Placerville	CA
D.L. Bliss State Park Ranger Station	Tahoma	CA
Custom House Federal Building	Denver	CO
20th Street Recreation Center	Denver	CO
Lafayette Fire Station #2	Lafayette	CO
Loveland Fire Station #6	Loveland	CO
Algerian Chancery	Washington	DC
Embassy of Botswana	Washington	DC
Embassy of Costa Rica	Washington	DC
Nigerian Embassy	Washington	DC
Smithsonian Archives & Office Bldg.	Washington	DC
Swedish Embassy	Washington	DC
Historic Fire Station	Palm Beach	FL
Palm Beach Historic Fire House	Palm Beach	FL
St. Augustine City Hall	St. Augustine	FL
Bedford Drug Façade Rehab. Project	Bedford	IA
Stanton Downtown Façade Project	Stanton	IA

Commercial Project List

St. Luke's Regional Medical Center	Boise	ID	Army National Guard Readiness Ctr.	Walla Walla	WA
Max McGraw Wildlife Foundation	Dundee	IL	Wisconsin Farmers Union	Chippewa Falls	WI
Bourbon County Courthouse	Paris	KY	Historic Train Depot	Wausau	WI
Chelmsford Town Hall	Chelmsford	MA	County Commissioner's Office Bldg.	Martinsburg	WV
Fenway Park	Boston	MA	Bayfront Bed & Breakfast	St. Augustine	FL
Nantucket Police Department	Boston	MA			
Nantucket Fire Department	Nantucket	MA	Hotels, Resorts & Spas		
Nantucket Public Safety Complex	Nantucket	MA	Marriott Grand Hotel	Fairhope	AL
U.S. Coast Guard	Nantucket	MA	Battle House Renaissance Mobile	Mobile	AL
Governor's Mansion	Annapolis	MD	Ventana Inn & Spa	Big Sur	CA
Maryland Income Tax Building	Annapolis	MD	Hotel Los Gatos	Los Gatos	CA
Maryland Treasury Building	Annapolis	MD	Orleans Hotel	Old Sacramento	CA
Camden Yards Train Station	Baltimore	MD	Vintage Inn, Sutter Home Winery	St. Helena	CA
Harford County Building	Bel Air	MD	Hotel Jerome	Aspen	CO
Prince Georges County Fire Station	Bowie	MD	Garden of the Gods Resort	Colorado Springs	CO
Indian Head, Naval Sfc. Warfr. Ctr.	Indian Head	MD	Biltmore Hotel	Coral Gables	FL
Camp Greentop Dining & Recreation Hall	Thurmont	MD	St. Augustine Inn	St. Augustine	FL
Point Betsie Lighthouse Shop	Frankfurt	MI	Birchwood Inn	St. Petersburg	FL
John Ball Zoo, Treehouse Ctr.	Grand Rapids	MI	Imperial Hotel	Atlanta	GA
Ludington State Park Beach House	Ludington	MI	Winecoff Hotel	Atlanta	GA
Marshall City Hall	Marshall	MI	Cloister Hotel & Resort	Sea Island	GA
Traverse City Commons	Traverse City	MI	Custom House	Boston	MA
Traverse City Chamber of Comm.	Traverse City	MI	Inn at Harvard	Cambridge	MA
Traverse City Visitors' Center	Traverse City	MI	Chatham Bars Inn	Chatham	MA
Graco Park	Minneapolis	MN	Admiral Fell Inn	Baltimore	MD
Marine Corps Air Station Cherry Pt.	Havelock	NC	South Mountain Inn	Boonesboro	MD
Chatham County Court House	Pittsboro	NC	Kinlochen Lodge	Thompsonville	MI
Stoney Brook Millstone Assoc.	Pennington	NJ	Herkimer Hotel	Grand Rapids	MI
The Watershed Institute	Pennington	NJ	Kootenai Lodge & Resort	Big Fork	MT
Americas Society/Council of the Americas	New York	NY	Candlewood Suites	Bluffton	NC
Brooklyn Navy Yard – GMC	Brooklyn	NY	Virgin Spa at Natirar	Peapack	NJ
Erie Canal Harbor Development of Longshed Building	Buffalo	NY	Hotel Parq Central	Albuquerque	NM
Hamlin Beach State Park's Bathhouse	Hamlin	NY	Hotel Santa Fe	Santa Fe	NM
Columbia County Court House	Hudson	NY	Santa Fe Motel	Santa Fe	NM
Letchworth State Park's Visitor Center	Letchworth	NY	Rolling Hills Farm	Westport	NY
Forensic Identification Unit (FIU) Bldg.	New York	NY	21C Hotel	Cincinnati	OH
Logan County Court House	Bellefontaine	OH	Great Wolf Lodge	Scotrun	PA
Defiance County Jail	Defiance	OH	Castle Hill Beach Cottages	Newport	RI
Ancaster Fairgrounds Pavilion	Ancaster	ON	The Chanler at Cliff Walk	Newport	RI
Seaforth Town Hall	Seaforth	ON	Ocean House Resort Hotel	Watch Hill	RI
Italian Consulate	Toronto	ON	Weekapaug Inn	Westerly	RI
Kortright Center for Conservation	Woodbridge	ON	Candlewood Suites	Bluffton	SC
Woodstock Town Hall	Woodstock	ON	Gaylord Opryland Hotel	Nashville	TN
Letterkenney Army Depot	Chambersburg	PA	Liberty Hotel	Cleburne	TX
DWP Building for Luzerne County	Willkes Barre	PA	Shenandoah Hotel	Roanoke	VA
Newport Public Boaters Facility	Newport	RI	The Inn at SentryWorld	Stevens Point	WI
Roger Williams Zoo	Providence	RI	Jefferson Street Inn	Wausau	WI
Georgetown County Courthouse	Georgetown	SC	Owl Ridge Cabin	Wausau	WI
Coolidge Park Carousel Building	Chattanooga	TN	Greenbrier Spa	Greenbrier	WV
Frank E. Moss Federal Courthouse	Salt Lake City	UT	Turks & Caicos Sporting Club Turks & Caicos Islands	Ambergris Cay	
Randolf Macon College	Ashland	VA			
Longwood Technology Center	Farmville	VA	Medical Facilities		
Fredericksburg Courthouse	Fredericksburg	VA	Monterey Penin. Ortho/Sports Med.	Monterey	CA
Fort Monroe General's Residence	Hampton	VA	Visiting Nurse & Hospice Care	Santa Barbara	CA
Southside Community College	Keysville	VA	Smile Power Orthodontics	Walnut Creek	CA
Stonewall Jackson Firehouse	Manassas	VA	Boise V.A. Medical Center	Boise	ID
Washington Bldg., VA State Offices	Richmond	VA	St. Luke's Regional Medical Center	Boise	ID
Virginia Dept. of Transportation	Rocky Mount	VA	Timonium Medical Center	Bethesda	MD
			Old Line Center	Waldorf	MD

Medical Facilities, cont.

Kalkaska Memorial Health Center	Kalkaska	MI
Munson Manor Hospitality House	Traverse City	MI
La Esquina Medical Center	Santa Fe	NM
Ronald McDonald House	Portland	OR
Blue Ridge Interceptive Center	Roanoke	VA
Aspirus Family House	Wausau	WI

Restaurants/Winerys

Mastro's Steakhouse	Palm Desert	CA
Starlane Winery	Santa Barbara	CA
Columbia Restaurant	St. Augustine	FL
Pizza Time	St. Augustine	FL
River & Fort Restaurant Rooftop Lounge	St. Augustine	FL
Eddie's Bar & Grill	Coeur d'Alene	ID
Lou Malnati's Pizzeria	Schaumburg	IL
Anejo Restaurant	Falmouth	MA
Café Deluxe	Gaithersburg	MD
Blue Corn Restaurant & Brewery	Santa Fe	NM
Josh's Ranch House Bar-B-Q	Santa Fe	NM
Chateau des Charmes Winery	Niagara-on-the-Lake	ON
Peller Estates Winery	Niagara-on-the-Lake	ON
Ducharme Winery	Niagara-on-the-Lake	ON
Pickel Barrel Restaurant	Toronto	ON
Sokol Blosser Winery	Dayton	OR
Alexana Winery	Newberg	OR
Clam Bake Club	Middletown	RI
Tony Mandola's Restaurant	Houston	TX
Malarkey's Pub & Townies Grill	Wausau	WI
Red Eye Brewing Company	Wausau	WI

Miscellaneous & Retail

Chula Vista Olympic Training Ctr.	Chula Vista	CA
Los Gatos Plumbing Supply	Los Gatos	CA
Ebner Hotel (retail & offices)	Old Sacramento	CA
D'arrigo Co. Bros. Corp. Offices	Salinas	CA
Peet's Coffee	Walnut Creek	CA
Cardinal Mill	Boulder	CO
REI Flagship Store	Denver	CO
Restoration Hardware	Greenwich	CT
TransAfrica	Washington	DC
Sandy Beaver Center	Gainesville	GA
Frederica Real Estate Office	Sea Island	GA
Melaleuca Corp. Headquarters	Idaho Falls	ID
Yellowstone Plaza	Idaho Falls	ID
Wild Turkey Bourbon Visitors Center	Lawrenceburg	KY
Cunard Building	Boston	MA
CVS	Boston	MA
Calvert St. Office Bldg.	Baltimore	MD
Charlevoix Community Foundation	East Jordan	MI
Main Street Center	East Jordan	MI
Evergreen Day Care	Holland	MI
City Market Center	Kalamazoo	MI
Briny Building	Manistee	MI
Schmidt Realty	Traverse City	MI
Peer House	Minneapolis	MN
Schmidt Brewery Rathskeller	St. Paul	MN
Big Cedar Lodge Garden Chapel	Ridgedale	MO
JLF & Associates Office	Bozeman	MT
Montana Tile & Stone	Bozeman	MT

PTA Thrift Store	Carrboro	NC
Duke Farms	Hillsborough Tshp.	NJ
Lincoln/Washington Street Bldg.	Santa Fe	NM
Cohoes Music Hall	Cohoes	NY
Dykes Lumber Company	Hawthorne	NY
Pottery Barn	Huntington	NY
Schumacher Building	New York	NY
Ancaster Fairgrounds Pavilion	Ancaster	ON
Château des Charmes	ON	Canada
241 Lakeshore East	Oakville	ON
Penguin Industries	Coatsville	PA
Narragansett Towers	Narragansett	RI
60 Ship Street	Providence	RI
Swan Point Cemetery	Providence	RI
Max Mehl Building	Fort Worth	TX
Firehouse Square Office Building	Alexandria	VA
Plasters Commercial Building	Leesburg	VA
Baskets Etc.	Roanoke	VA
Whitehorse Auto Wash	Warrenton	VA
Red Canoe Credit Union	Castle Rock	WA
Coldwell Banker Offices	Greenville	WI
Rothschild Pavilion	Rothschild	WI
Greenbrier Spa	Greenbrier	WV
312 2nd Street	Laramie	WY
Pier One Stores	United States & Canada	
The Grange	ON	Canada
Old Bridle Shop	ON	Canada
Loredo Farms	ON	Canada
Royal Caribbean Port	Falmouth	Jamaica

Multi-Family & Urban Development

Colony at Grand Luxury Condos	Fairhope	AL
Freedom Manor	Mobile	AL
Crystal Flats	Bentonville	AR
Hacienda Desert Mtn. Condos	Scottsdale	AZ
Hope VI Housing Project	Tucson	AZ
Park Hamilton Condos	Beverly Hills	CA
The Camille North Apartments	Mountain View	CA
Orleans Hotel	Old Sacramento	CA
The Palo Alto Apartments	Palo Alto	CA
Sainte Claire Building	San Jose	CA
68 Arch Street	Greenwich	CT
Arbor Condominiums	Washington	DC
Bancroft Place	Washington	DC
Aphora Coach Homes	Jacksonville	FL
Evermore	Orlando	FL
Village of Baytowne Wharf	Sandestin	FL
Bridges of Watersound Condos	Seagrove Beach	FL
Windsor Village Centre	Vero Beach	FL
Atlantic Station	Atlanta	GA
Creston Apartments	Creston	IA
Bowstring Lofts	Davenport	IA
Urbane210	Davenport	IA
Urbane1220	Sioux City	IA
River Street Plaza Condos	Aurora	IL
Fulton Place Condos	Chicago	IL
Clocktower Pointe Condos	Countryside	IL
Lexington Tower	Decatur	IL
Brookwood Luxury Condos	Des Plaines	IL
Clock Tower Point Condos	Harwood Heights	IL

Commercial Project List

Moline Apartments	Moline	IL	Mills at High Falls	Rochester	NY
Benton Terrace Condos	Naperville	IL	Susan B. Anthony District Bldgs.	Rochester	NY
Meadow Ridge Condos	Northbrook	IL	Metro Housing Authority	Cleveland	OH
Lakewood Park Apartments	Lexington	KY	The Aubrey	Columbus	OH
RiverPark Place	Louisville	KY	Lexington Apartments	Portland	OR
Trolley House Condos	Boston	MA	Diamond Preservation	Philadelphia	PA
Seaport Landing	Lynn	MA	Project HOME – Rowan Judson	Philadelphia	PA
Worcester Court House Lofts	Worcester	MA	Heinz Lofts	Pittsburgh	PA
Village at Homeland	Baltimore	MD	Beachwood Apartments	Narragansett	RI
Baker Lofts	Grand Rapids	MI	Southwinds Apartments	Narragansett	RI
Wangstad Commons	Brooklyn Center	MN	Bristol Condos	Charleston	SC
Cedar Point Townhomes	Eagle Lake	MN	Factors Walk Luxury Condos	Charleston	SC
Sibley Parkway Crossing	Mankato	MN	Buckingham Village	Arlington	VA
29 Bryant Apartments	Minneapolis	MN	Westover Apartments	Arlington	VA
1040 Como Ave.	Minneapolis	MN	Sycamore House	Ashburn	VA
Akin Apartments	Minneapolis	MN	Country Club Apartments	Leesburg	VA
The Central	Minneapolis	MN	Rolling Oaks Condos	Manassas	VA
Jax Apartments	Minneapolis	MN	Malvern Manor Apartments	Richmond	VA
Karmel Square Apartments	Minneapolis	MN	Urbane115	Appleton	WI
Local 15 Apartments	Minneapolis	MN	Tripod Condos	Hudson	WI
Nox Apartments	Minneapolis	MN	Bantr Apartments	Stevens Point	WI
Odie Apartments	Minneapolis	MN	North Side Yard #3 Apartments	Stevens Point	WI
The Whit	Minneapolis	MN	Bantr Apartments	Sun Prairie	WI
Stonehill Apartments	Plymouth	MN	Bantr Apartments	Wausau	WI
500 Grand Hill Condos	St. Paul	MN	Jun Villa Condos	Seoul	So. Korea
The Arlow	St. Paul	MN			
The Hollows	St. Paul	MN	Religious Institutions		
New Town Development	St. Charles	MO	Holy Spirit Church	Sacramento	CA
Margaret Building	Omaha	NE	German Congregational Church	Longmont	CO
Steinbach Building	Asbury Park	NJ	First Congregational Church	Loveland	CO
KS Broad	Ridgewood	NJ	Masonic Temple	Washington	DC
Heritage at Claremont	Bernardsville	NJ	Birmingham United Methodist	Alpharetta	GA
117 Beekman Street	New York	NY	St. Mary's Episcopal Church	High Point	NC
Pierrepont	Brooklyn	NY	Zion Church	Long Valley	NJ
Polhemus	Brooklyn	NY	Ascension Evangelical Lutheran	Baltimore	MD
15 Allen Street Lofts	Buffalo	NY	Christ Episcopal Church	Columbia	MD
201 Ellicott	Buffalo	NY	St. Mark United Methodist Church	Hanover	MD
1585 Hertel Avenue	Buffalo	NY	First Presbyterian Church	Elk Rapids	MI
Gateway Longview	Buffalo	NY	Our Lady of Clear Creek Abbey	Hulbert	OK
Nineteen North	Buffalo	NY	United Methodist Church	Paoli	PA
Stratford Arms Apartments	Buffalo	NY	Westminster Presbyterian Church	West Chester	PA
68 Tonawanda Street	Buffalo	NY	Bruton Parish Episcopal Church	Williamsburg	PA
Regency at Lawrence	Lawrence	NY	Fairfax Presbyterian Church	Fairfax	VA
Wildbriar Estates	Livonia	NY	Harmony United Methodist	Hamilton	VA
Warburton-Wells	Mamaroneck	NY	St. Frances De Sales Church	Purcellville	VA
Puck Building	Manhattan	NY	Crestwood Presbyterian Church	Richmond	VA
Washington & Greenwich St.	Manhattan	NY	Ironbridge Baptist Church	Richmond	VA
36 Bleecker Street	Manhattan	NY	South Minster Church	Richmond	VA
80th Street & Lexington	Manhattan	NY	First Baptist Church Ministry	Roanoke	VA
812 Greenwich Street	Manhattan	NY	Calvary Baptist Church	Winchester	VA
Sterling Mason	New York	NY	Good Shepherd Lutheran Church	Woodbridge	VA
625 Goodman	Rochester	NY	Zion Church	Fond du Lac	WI
74 University	Rochester	NY	Sacred Heart Cathedral	Charlestown	WV
The Carnegie	Rochester	NY			





Scan the QR code
to see our other
available brochures



kolbewindows.com/brochures

KOLBE
WINDOWS & DOORS
We're for the visionaries.®

1323 S. 11th Avenue | Wausau, WI 54401-5998
715.842.5666

www.kolbewindows.com

© 2024 Kolbe & Kolbe Millwork Co., Inc. Kolbe & Kolbe Millwork Co., Inc. reserves the right to change specifications without notice. The photography featured herein does not necessarily imply an endorsement of Kolbe products by the property owners. Photography used may not represent current Kolbe product features and options.
Front cover photo © Benjamin Benschneider